

# 10mm CSV Cartridge Style Valve



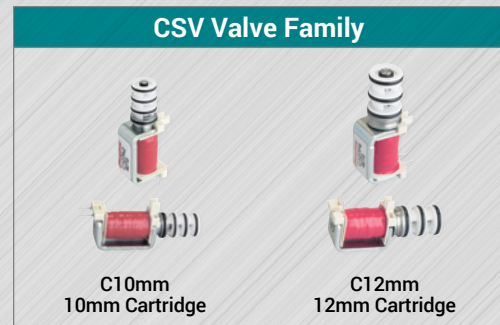
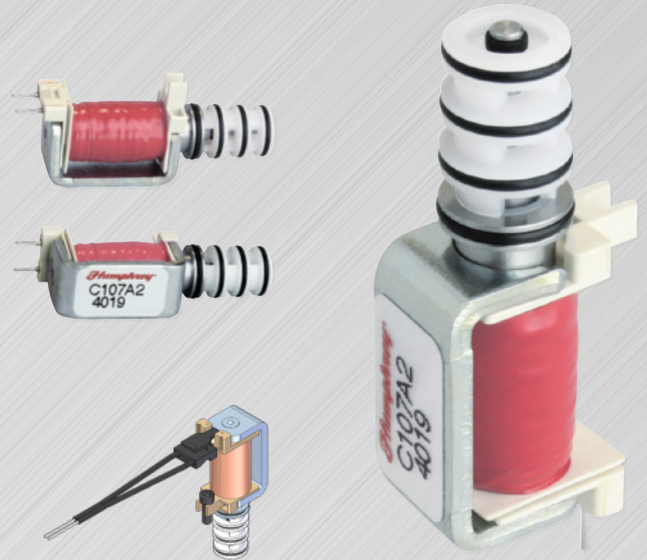
## Miniature 2- or 3-Way Pneumatic Solenoid Valve

Humphrey 10mm CSV Solenoid Valve was purposely engineered for optimal flow and integration into compact spaces required from today's high tech device and instrument maker. The thoughtful cartridge design provides more porting options and new possibilities in miniature pneumatic system design.

Purchase the CSV only and design your own manifold porting solution, or let our Humphrey Engineered Solutions Team listen to your expectations and model one up for you.

### FEATURES

- Maximized Flow Capacity
- Fast Response, Direct-Acting Design
- Designed for user flexibility and integration into compact devices or spaces
- Pressure Balanced – ready for use as 2- or 3-way
- Normally Closed or Normally Open
- Customizable for different power and flow requirements



**ACCESS ONLINE CATALOG**  
 Obtain 3D CAD Download, CAD Viewer,  
 2D Dimensional Drawings, Product Images,  
 DataSheet PDFs, Product Accessories



## How to Order

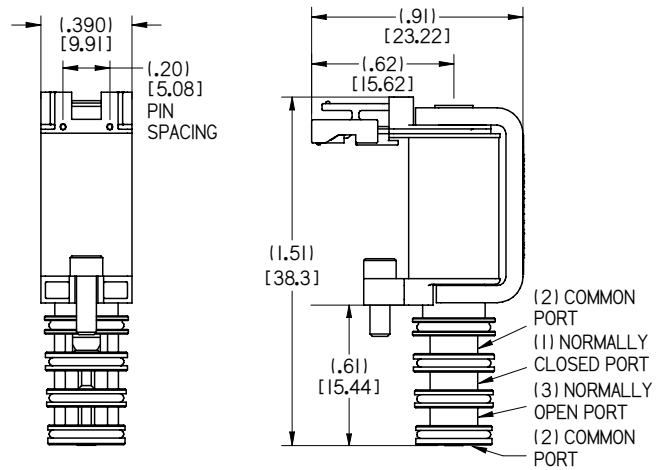
### 10mm CSV Cartridge Style Valve

|              |   |                                   |  |  |                      |
|--------------|---|-----------------------------------|--|--|----------------------|
| C10          | 7A  |                                   | 2                                      |  | C107A2               |
| <b>MODEL</b> | <b>ELECTRICAL ENTRY</b><br>7A: Axial Plug-In<br>7P: Perpendicular Plug-In | <b>SEAL</b><br>nil: NBR<br>F: FKM | <b>VOLTAGE</b><br>2: 12VDC<br>4: 24VDC | <b>CONNECTOR</b><br>nil: Plug-In Electrical Connector with 30cm lead wires included<br>X: Plug-In Electrical Connector excluded or leads | <b>ORDER EXAMPLE</b> |

# 10mm CSV Cartridge Style Valve

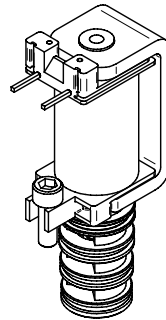
| SPECIFICATIONS              | 10MM CSV  |
|-----------------------------|---|
| TYPE OF OPERATION           | Direct Solenoid                                     |
| FUNCTION                    | 2- or 3-Way, NC or NO                               |
| MEDIA                       | Air, Oxygen, Inert Gas                              |
| PRESSURE RATING - PSI (BAR) | VAC-30 (2)  |
| RESPONSE TIME (TYP)         | 10ms on, 6ms off                                    |
| MAXIMUM FLOW @ 30 PSI       | 40 SLPM (.075 Cv)                                   |
| AMBIENT TEMPERATURE         | 32-125° F (0-52° C)                                 |
| POWER CONSUMPTION (WATTS)   |   |
| 12V MODEL                   | 2   |
| 24V MODEL                   | 2   |
| NORMAL RESISTANCE (OHMS)    |   |
| 12V MODEL @72°F (22°C)      | 72  |
| 24V MODEL @72°F (22°C)      | 288   |
| WETTED MATERIALS            | Acetal, LCP, Stainless Steel, NBR (standard) or FKM |
| WEIGHT – OZ (GRAMS)         | .33 (11)  |
| COMPLIANCE                  | RoHS, REACH   |

Purposely designed to use one or both common ports for maximum manifold flexibility.



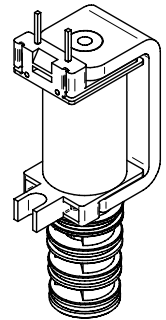
## PERPENDICULAR PIN OPTION

Two 0.025" [0.64] Square Pins



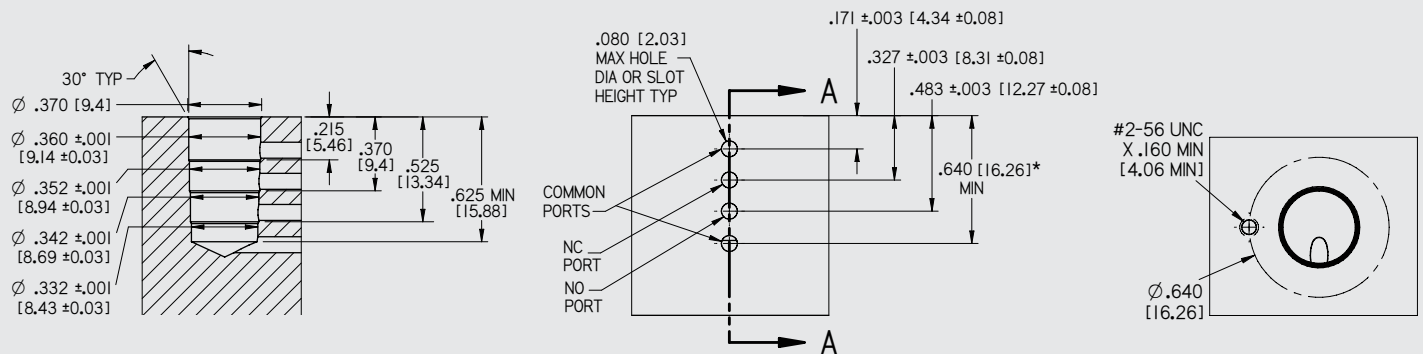
## AXIAL PIN OPTION

Two 0.025" [0.64] Square Pins



## MANIFOLD INTERFACE

\*In order to use the bottom common port, this dimension is needed.



Certified: ISO 9001:2015

**HUMPHREY-PRODUCTS.COM**

Humphrey Life Science Group  
© 2020 Humphrey Products Company, Inc.  
Printed in U.S.A.  
**LDS10CSV20**

Humphrey Products Company  
5070 East N Avenue  
Kalamazoo, MI 49048 USA  
E: lsg@Humphrey-Products.com  
P: 1.800.477.8707



**Humphrey**