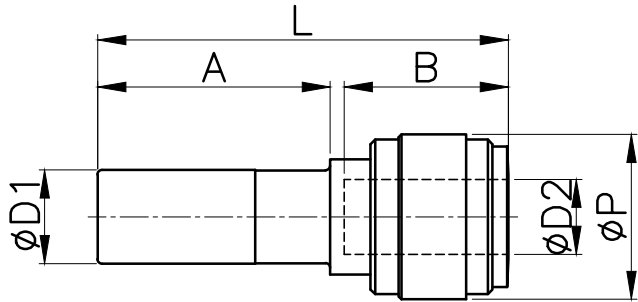


HGJ



MODEL(mm)	$\phi D1$	$\phi D2$	ϕP	L	A	B (TUBE DEEP)	WEIGHT (g)	EA (BOX)
HGJ 0604	06	04	13.2	36.7	21.0	14.7	2.4	100
HGJ 0804	08	04	15.5	40.4	22.5	14.7	3.7	100
HGJ 0806	08	06	15.5	40.6	22.5	16.1	3.5	100
HGJ 0810	08	10	20.0	44.9	22.5	20.1	5.4	50
HGJ 1006	10	06	17.6	43.4	24.8	16.1	5.2	50
HGJ 1008	10	08	17.6	43.8	24.8	17.5	5.1	50
HGJ 1208	12	08	20.0	51.3	29.5	17.5	7.3	50
HGJ 1210	12	10	20.0	51.6	29.5	20.1	6.9	50