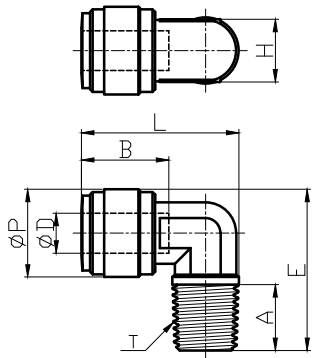


HPL



MODEL (mm)	ϕD	ϕP	T(BSPT, R)	A	B (TUBE DEEP)	E	H	L	WEIGHT (g)	EA (BOX)
HPL 04R01	04	15.0	1/8	9.1	14.7	25.6	10.0	25.2	4.2	100
HPL 04R02	04	15.0	1/4	13.1	14.7	30.6	10.0	26.8	5.6	50
HPL 06R01	06	15.0	1/8	9.1	16.1	25.6	10.0	25.4	4.1	100
HPL 06R02	06	15.0	1/4	13.1	16.1	30.6	10.0	27.0	5.1	50
HPL 06R03	06	17.6	3/8	13.5	16.1	32.6	13.0	33.1	8.4	50
HPL 08R02	08	17.6	1/4	13.1	17.5	32.2	13.0	31.5	7.0	50
HPL 08R03	08	17.6	3/8	13.5	17.5	32.6	13.0	33.5	8.0	50
HPL 10R02	10	20.0	1/4	13.1	20.1	34.7	14.0	32.0	8.1	50
HPL 10R03	10	20.0	3/8	13.5	20.1	35.7	14.0	33.9	9.2	50
HPL 12R02	12	23.6	1/4	13.1	24.7	38.3	17.0	38.2	13.1	25
HPL 12R03	12	23.0	3/8	13.5	24.7	38.3	17.0	38.4	13.2	25
HPL 12R04	12	23.0	1/2	16.3	24.7	41.4	17.0	40.7	15.6	25