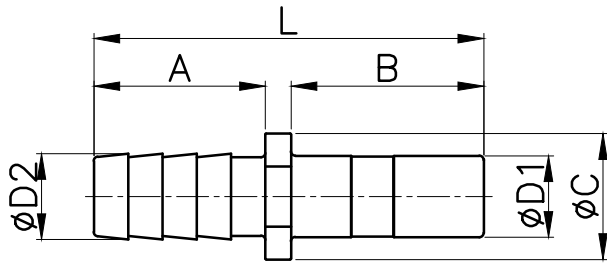


# HCJB



MODEL	$\phi D1$	$\phi D2$	$\phi C$	L	A	B	WEIGHT (g)	BOX(EA)
HCJB 0604	6	4.5	11.4	38.2	18.0	17.2	1.0	100
HCJB 0606	6	6.5	11.4	38.2	18.0	17.2	1.1	100
HCJB 0806	8	6.5	12.2	40.0	18.0	19.0	1.7	100
HCJB 1006	10	6.5	14.7	43.5	18.0	22.5	2.3	100
HCJB 1008	10	8.6	14.7	43.5	18.0	22.5	2.7	100
HCJB 1010	10	10.5	14.7	45.5	20.0	22.5	—	100
HCJB 1210	12	10.5	18.5	50.5	20.0	27.5	—	100