

NBR: -10°C ÷ 95°C
FKM: -20°C ÷ 205°C
Standard version: NBR



Working pressure:
0-12 Bar (suggested)
35 Bar (max)



MINI-L: Compressed air, water, gas, non-aggressive mineral or synthetic oils, applications in non-corrosive environments and fluids suitable with construction materials
MINI-316: Compressed air, water, grease, oils, mild acids, applications in highly oxidising or corrosive environments and fluids suitable with construction materials



Parallel gas BSPP ISO 228 from G1/8" to G3/8"

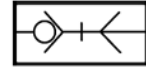
NOMINAL DIAMETER

5,5 mm

FLOWRATE

500 l/min

CONFIGURATIONS



SO
Single
Shutter



Food contact materials
EC 1935/2004
MINI-316 &
AMN-316 Series





D.M. 174/2004
MINI-316 &
AMN-316 Series




Products in compliance with
EC Regulation 1907/2006



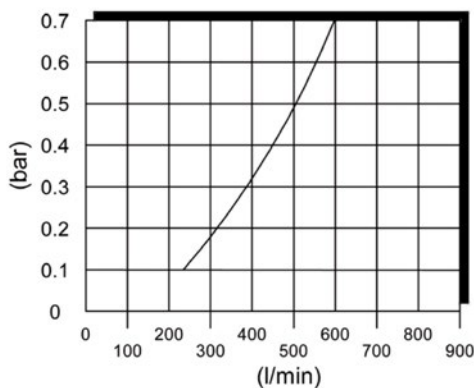
Products in compliance with
the directive EU 2015/863

COMPONENTS	MINI-L	MINI-316  
Body	Nickel-plated brass	Stainless steel AISI 316
Slide	Nickel-plated steel	Stainless steel AISI 316
Adapter	Nickel-plated brass	Stainless steel AISI 316
Valve	Nickel-plated brass	Stainless steel AISI 316
Spring	Stainless steel AISI 302	Stainless steel AISI 316
Ball	Stainless steel AISI 316	Stainless steel AISI 316
Retaining ring	Stainless steel AISI 302	Stainless steel AISI 316
Wrench	Nickel-plated brass	Stainless steel AISI 316
Seal	NBR - FKM	FKM

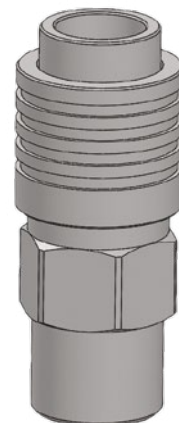
CONNECTION	AMN-L	AMN-316  
Body	Nickel-plated brass	Stainless steel AISI 316

FLOW CHART

Chart created considering a working pressure of 6 Bar with a pressure drop of 0.5 Bar and simple shut-off.

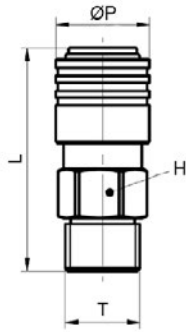


VIEW - QUICK COUPLING MINI-H



MINI-M

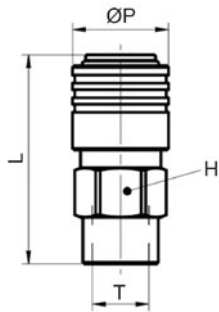
Male mini quick coupling BSPP thread



CODE	T	ØP	L	H
MINI-M1-L	G 1/8"	16,5	36,2	14
MINI-M1-316V	G 1/8"	16,5	36,2	14
MINI-M1-L	G 1/4"	16,5	38,2	14
MINI-M3-16V	G 1/4"	16,5	38,2	14
MINI-M3-316V	G 3/8"	16,5	39,2	19

MINI-H

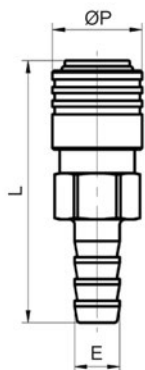
Female mini quick coupling BSPP thread



CODE	T	ØP	L	H
MINI-H1-L	G 1/8"	16,5	37,2	14
MINI-H1-316V	G 1/8"	16,5	37,2	14
MINI-H1-L	G 1/4"	16,5	39,2	17
MINI-H3-16V	G 1/4"	16,5	39,2	17

MINI-E

Mini quick coupling with barb connector

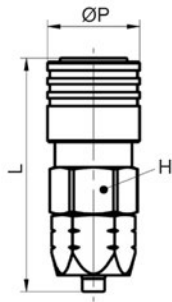


CODE	E	ØP	L	H
MINI-E6-L	6,3	16,5	48,2	14
MINI-E6-316V	6,3	16,5	48,2	14
MINI-E8-L	8,3	16,5	48,2	14
MINI-E8-316V	8,3	16,5	48,2	14



MINI-RR

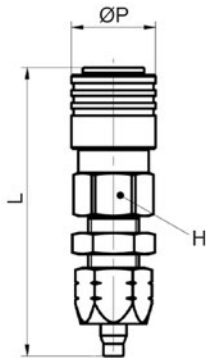
Mini quick coupling with push-on connector



CODE	TUBE Ø	ØP	L	H
MINI-RR6-L	6x4	16,5	43,2	14
MINI-RR8-L	8x6	16,5	43,2	14

MINI-MM

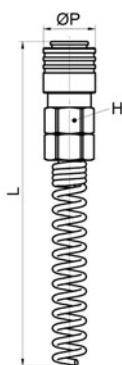
Bulkhead mini quick coupling with push-on connector



CODE	TUBE Ø	ØP	L	H
MINI-MM6-L	6x4	16,5	56,7	14
MINI-MM8-L	8x6	16,5	56,7	14

MINI-RRR

Mini quick coupling with push-on connector and spring

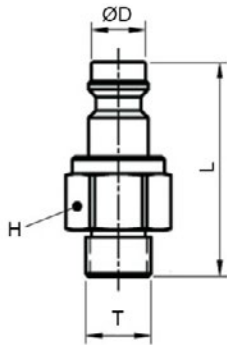


CODE	TUBE Ø	ØP	L	H
MINI-RR6R-L	6x4	16,5	124,7	14
MINI-RR8R-L	8x6	16,5	123,2	14



AMN-M

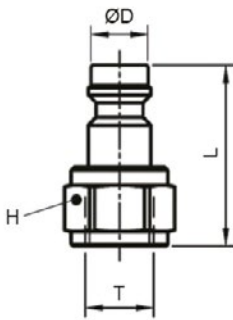
Male mini connection BSPP thread



CODE	T	ØD	L	H
AMN-M1-L	G 1/8"	8,1	32,1	14
AMN-M1-316	G 1/8"	8,1	32,1	14
AMN-M-L	G 1/4"	8,1	34,1	14
AMN-M-316	G 1/4"	8,1	34,1	14

AMN-H

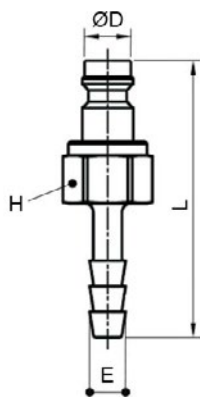
Female mini connection BSPP thread



CODE	T	ØD	L	H
AMN-H1-L	G 1/8"	8,1	25,1	14
AMN-H1-316	G 1/8"	8,1	25,1	14
AMN-H-L	G 1/4"	8,1	29,1	17
AMN-H-316	G 1/4"	8,1	29,1	17

AMN-E

Mini connection with barb connector

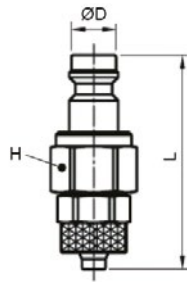


CODE	E	ØD	L	H
AMN-E6-L	6,3	8,1	37,1	14
AMN-E8-L	8,3	8,1	37,1	14



AMN-RR

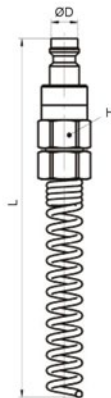
Mini connection with push-on connector



CODE	TUBE Ø	ØD	L	H
AMN-RR6-L	6x4	8,1	39,1	12
AMN-RR6-316	6x4	8,1	39,1	12
AMN-RR8-L	8x6	8,1	39,1	14
AMN-RR8-316	8x6	8,1	39,1	14

AMN-RRR

Mini connection with push-on connector and spring



CODE	TUBE Ø	ØD	L	H
AMN-RR6R-L	6x4	8,1	120,6	12
AMN-RR8R-L	8x6	8,1	119,1	14

