

## 2/2 WAY PILOT OPERATED SOLENOID VALVE, G 3/8" ÷ G 3/4"

### COMMON FEATURES

Media: water <sup>Ⓢ</sup>, oil, air <sup>Ⓔ</sup>

Media temperature: -10°C ÷ +130°C

Ambient temperature: -10°C ÷ +50°C

Body material: brass (CW617N EN 12165)

Orifice material: stainless steel (1.4305 EN 10088/AISI 303)

Operator material: stainless steel

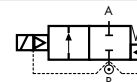
Protection class: IP 65 (with connector and gasket)

### NOTES

<sup>Ⓢ</sup> When using liquid fluids waterhammer and pressures higher than 20 barg can cause the diaphragm to tear

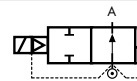
<sup>Ⓔ</sup> Not 100% leak-proof when used with air/gases. Approximate leak rate is 1,5 ml/min at max. OPD

### TYPE: D232÷D234

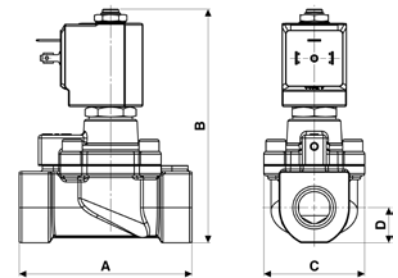


Normally Closed

### TYPE: RD232÷RD234



Normally Open



Flow direction overseat 1 → 2

DIMENSIONS & WEIGHTS		D232	D233	D234	RD232	RD233	RD234
<b>G connection</b>	[ISO 228]	3/8"	1/2"	3/4"	3/8"	1/2"	3/4"
<b>A</b>	[mm]	86	86	86	86	86	86
<b>B</b>	[mm]	116.5	116.5	116.5	114	114	114
<b>C</b>	[mm]	50.2	50.2	50.2	50.2	50.2	50.2
<b>D</b>	[mm]	17.5	17.5	17.5	17.5	17.5	17.5
<b>weight</b>	[kg]	1	0.9	0.9	1	0.9	0.9

VALVE	nominal Ø	flow rate Kvs	min.	OPD		COILS	
				max. AC	max. DC	code	[Volts/Hz]
code	[mm]	[l/min]	[barg]	[barg]	[barg]	code	[Volts/Hz]
<b>D232DTW</b>	16.5	42	1	50	50	7250	24v DC
<b>D233DTW</b>	16.5	46	1	50	50	7200	24v 50/60Hz
<b>D234DTW</b>	16.5	48	1	50	50	7400	110v 50Hz - 120v 60Hz
						7600	200v 50Hz - 220v 60Hz
						7700	230v 50Hz - 240v 60Hz

### D232/233/234 - PTFE seal, NC -

Operator seal material: Ruby  
 Diaphragm material: FKM  
 Main seal material: PTFE  
 Coil power: AC 18va (holding)  
 AC 36va (inrush)  
 DC 14w

### NOTES

Seamless tube as standard

VALVE	nominal Ø	flow rate Kvs	min.	OPD		COILS class 'H' only	
				max. AC	max. DC	code	[Volts/Hz]
code	[mm]	[l/min]	[barg]	[barg]	[barg]	code	[Volts/Hz]
<b>RD232DTW</b>	16.5	42	1	50	50	7251	24v DC
<b>RD233DTW</b>	16.5	46	1	50	50	7201	24v 50/60Hz
<b>RD234DTW</b>	16.5	48	1	50	50	7401	110v 50Hz - 120v 60Hz
						7601	200v 50Hz - 220v 60Hz
						7701	230v 50Hz - 240v 60Hz

### RD232/233/234 - PTFE seal, NO -

Operator seal material: Ruby  
 Diaphragm material: FKM  
 Main seal material: PTFE  
 Coil power: AC 18va (holding)  
 AC 36va (inrush)  
 DC 14w

### OPTIONS

**FKM** seal, temperature max. 130°C (e.g. code RD232DVW).  
 Max. OPD: 25 barg AC/DC, min. batch may be required

VALVE	nominal Ø	flow rate Kvs	min.	OPD		COILS	
				max. AC	max. DC	code	[Volts/Hz]
code	[mm]	[l/min]	[barg]	[barg]	[barg]	code	[Volts/Hz]
<b>D232DVW</b>	16.5	42	1	25	25	7250	24v DC
<b>D233DVW</b>	16.5	46	1	25	25	7200	24v 50/60Hz
<b>D234DVW</b>	16.5	48	1	25	25	7400	110v 50Hz - 120v 60Hz
						7600	200v 50Hz - 220v 60Hz
						7700	230v 50Hz - 240v 60Hz

### D232/233/234 - FKM seal, NC -

Operator seal material: foodgrade FKM  
 Diaphragm material: FKM  
 Main seal material: FKM  
 Coil power: AC 18va (holding)  
 AC 36va (inrush)  
 DC 14w

HIGH PRESSURE

HIGH PRESSURE

COMPRESSED AIR