

2/2 WAY DIRECT ACTING "DRY ARMATURE" SOLENOID VALVE

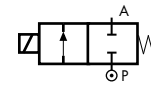
COMMON FEATURES

- Media: water and beverages
- Media temperature: -10°C ÷ +95°C
- Ambient temperature: -10°C ÷ +50°C
- Body material: Natural Polysulphone FDA compliant (PSU)
- Nominal diameter: 9 mm
- Operator material: stainless steel
- Seal material: silicone FDA compliant
- Protection class: IP 65 (with connector and gasket)
- Flow regulation screw as standard

NOTES

TOTAL SEPARATION BETWEEN INTERNAL PARTS AND MEDIUM

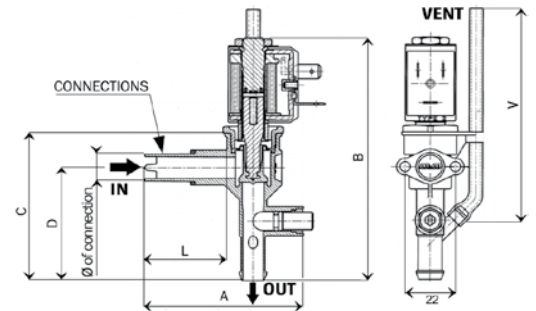
TYPE: WB251 ^⓪



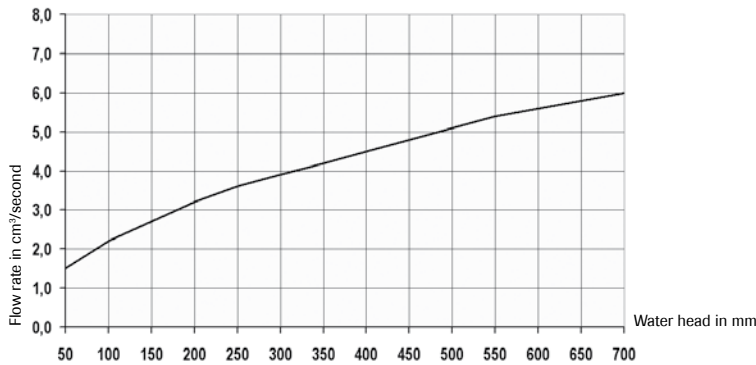
Normally Closed



| DIMENSIONS & WEIGHTS | | WB251DSS | WB251DSS1 | WB251DSS01 | WB251DSS12 |
|----------------------|------|----------|-----------|------------|------------|
| A | [mm] | 70 | 70 | 59.5 | 59.5 |
| B | [mm] | 108 | 108 | 108 | 108 |
| C | [mm] | 65.5 | 65.5 | 65.5 | 65.5 |
| D | [mm] | 50.2 | 50.2 | 50.2 | 50.2 |
| V | [mm] | 95 | 235 | 95 | 195 |
| weight | [kg] | 0.175 | 0.175 | 0.175 | 0.175 |



FLOW RATE CHART



| VALVE | type of connection | OPD | | | COIL | |
|-------------------|--------------------|--------|---------|---------|------|-----------------------|
| | | min. | max. AC | max. DC | code | [Volts/Hz] |
| code | [mm] | [barg] | [barg] | [barg] | code | [Volts/Hz] |
| WB251DSS | ∅ 12 x L=35 | 0 | 0.07 | 0.05 | 22V0 | 24v DC |
| WB251DSS1 | ∅ 12 x L=35 | 0 | 0.07 | 0.05 | 2200 | 24v 50/60Hz |
| WB251DSS01 | ∅ 11 x L=25 | 0 | 0.07 | 0.05 | 2400 | 110v 50Hz - 120v 60Hz |
| WB251DSS12 | ∅ 11 x L=25 | 0 | 0.07 | 0.05 | 2600 | 200v 50Hz - 220v 60Hz |
| | | | | | 2700 | 230v 50Hz - 240v 60Hz |

WB251 - Silicone FDA seal, NC -

Coil power: AC 10w (holding)
AC 16w (inrush)
DC 10w