

-20°C ÷ 80°C



From 0,5 to 10 Bar



Compressed air and fluids compatible with construction materials.



Parallel gas BSPP ISO 228 from G1/8" to G1"
Metric ISO 262 M5
NPT from N1/8" to N1/2"



Nickel plated brass
UNI EN 12165 CW 617N

Membrane: NBR for M5 thread
Polyurethane elastomer for other threads

Cap seal: Nylon



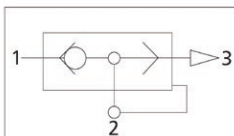
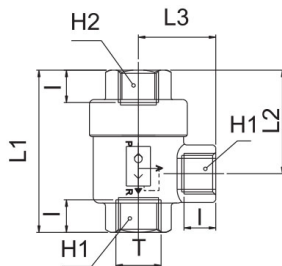
Products in compliance with the directive 2002/95/EC

RoHS2

Products in compliance with the directive 2011/65/EU

1100

Nickel plated brass quick exhaust valve BSPP thread



CODE	T	I	L1	L2	L3	H1	H2	GR.
1100TRM5	M5	4,0	24,8	15,6	10,5	10	10	27
1100TR18	G1/8"	8,0	42,0	28,0	19,5	14	14	84
1100TR14	G1/4"	11,0	53,0	34,5	25,0	19	19	146
1100TR38	G3/8"	12,0	58,0	36,0	26,0	21	21	150
1100TR12	G1/2"	14,0	71,0	44,0	35,0	26	26	314
1100TR34	G3/4"	18,0	86,0	52,0	38,5	32	32	450
1100TR1	G1"	19,0	94,0	56,0	42,0	38	38	525

