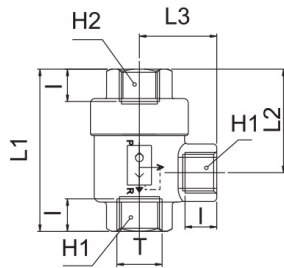
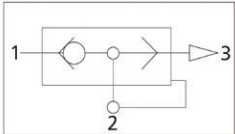


**1100-N**

Nickel plated brass quick exhaust valve NPT thread

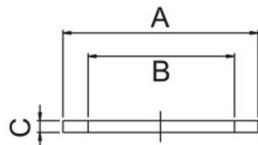


CODE	T	I	L1	L2	L3	H1	H2	GR.
1100TRN18	N1/8"	8,0	42,0	28,0	19,5	14	14	84
1100TRN14	N1/4"	11,0	53,0	34,5	25,0	19	19	146
1100TRN38	N3/8"	12,0	58,0	36,0	26,0	21	21	150
1100TRN12	N1/2"	14,0	71,0	44,0	35,0	26	26	314



**1101**

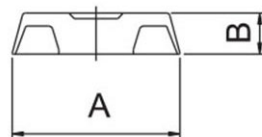
Body/cap seal in nylon



CODE	T	A	B	C	GR.
1101TRM5	M5	17,0	12,4	0,8	0,080
1101TR18	1/8"	23,8	20,0	1,0	0,014
1101TR14	1/4"	28,5	24,0	1,0	0,018
1101TR38	3/8"	28,5	24,0	1,0	0,018
1101TR12	1/2"	38,6	32,0	1,5	0,030
1101TR34	3/4"	45,0	38,0	1,5	0,760
1101TR1	1"	45,0	38,0	1,5	0,760

**1102**

Membrane in polyurethane elastomer for valve



CODE	T	A	B	GR.
1102TRM5	M5	13,5	4,5	0,4
1102TR18	1/8"	20,5	5,0	1,1
1102TR14	1/4"	25,5	5,8	1,9
1102TR38	3/8"	25,5	5,8	1,9
1102TR12	1/2"	35,5	8,2	2,5
1102TR34	3/4"	40,5	9,0	7,0
1102TR1	1"	40,5	9,0	7,0

