

+4°C ÷ +90°C  
Subject to applications



Up to 14 Bar at 20°C



Compressed air, water and fluids suitable with construction materials



Taper gas BSPT ISO 7 from R1/8" to R1"  
Parallel gas BSPP ISO 228 from G1/8" to G1"



To be used only for connecting LDPE Agricultural tubes Class 2.5 and Class 4 and other flexible tubes



Polypropylene

**FEATURES**

Good resistance to chemicals

**PRECAUTIONS**

- The products are made in plastic and it's necessary to use teflon tape over the thread for installation in order and to prevent air leakage. Be sure to prevent excessive torque when screwing the fittings.
- To connect the tube, insert the tube to the end and tight the cap before use.
- Cut the pressed part of the tube before connection to reuse the released tube



Products in compliance with the directive 2002/95/EC

**RoHS2**

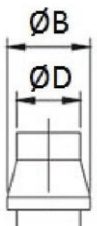
Products in compliance with the directive 2011/65/EU

**DIAMETER OF THE BARB**

O.D. EXTERNAL TUBE	Ø12	Ø16	Ø20	Ø25
ØB - barb	11.9 mm	15.8 mm	19.0 mm	23.0 mm

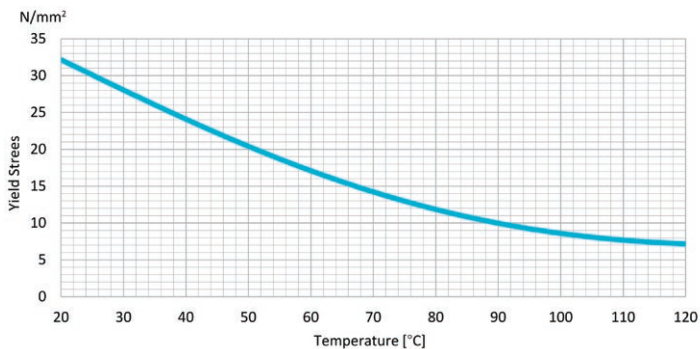


I.D. INTERNAL TUBE	Ø6	Ø8	Ø10	Ø12	Ø14	Ø16	Ø19
ØB - barb	8.1	10.2	12.4	13.9	15.9	18.1	21.0
ØD	6.1	8.1	10.1	11.9	13.8	15.9	18.8



Only for code 5570

**YIELD STRESS OF PP AS A FUNCTION OF TEMPERATURE**



**RECOMMENDED TIGHTENING TORQUE**

THREAD SIZE	NM	FT LB
1/8	0,01	0,01
1/4	0,3	0,2
3/8	1	1
1/2	2	2
3/4	5	4
1	8	6

