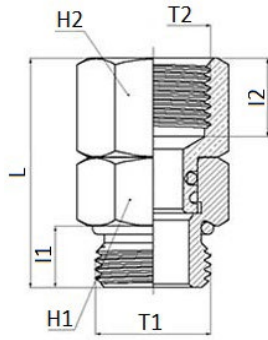


## 1118

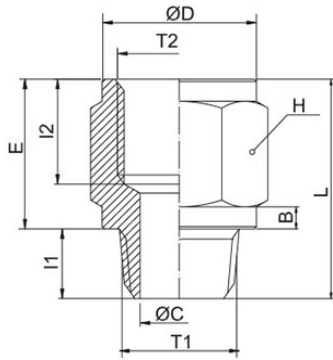
## Swivel nipple BSPP thread with OR



CODE	T1	T2	I1	I2	L	H1	H2	GR.
1118TR18	G1/8"	G1/8"	6,5	8	27	13	13	2,0
1118TR14	G1/4"	G1/4"	8	11	32	16	16	32,0
1118TR38	G3/8"	G3/8"	9	11,5	33,5	19	19	44,0

## 1120

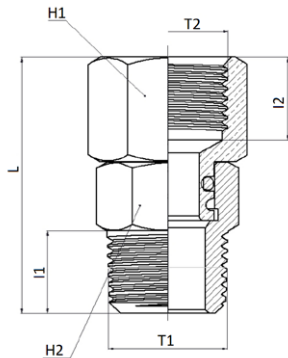
## Enlarger M BSPT thread / F BSPP thread



CODE	T1	T2	B	ØC	ØD	I1	I2	E	L	H	GR.
1120TR18	R1/8"	G1/8"	2,0	5,5	13,5	7,5	8	11,0	18,5	14	12,0
1120TR1814	R1/8"	G1/4"	2,0	5,5	16,5	7,5	10,5	13,5	21,0	17	18,0
1120TR1838	R1/8"	G3/8"	2,5	5,5	21,5	7,5	10,5	14,0	21,5	22	31,0
1120TR14	R1/4"	G1/4"	2,0	8,5	16,5	10,5	10,5	13,5	24,0	17	18,0
1120TR1438	R1/4"	G3/8"	2,5	8,0	21,5	10,5	10,5	14,0	24,5	22	32,0
1120TR1412	R1/4"	G1/2"	3,0	8,0	26,5	10,5	12,5	17,0	27,5	27	52,0
1120TR38	R3/8"	G3/8"	2,5	11,0	21,5	10,5	10,5	14,0	24,5	22	37,0
1120TR3812	R3/8"	G1/2"	3,0	11,0	26,5	10,5	12,5	17,0	27,5	27	55,0
1120TR3834	R3/8"	G3/4"	3,0	11,0	31,5	11,0	12,5	17,0	28,0	32	74,0
1120TR12	R1/2"	G1/2"	3,0	15,0	26,5	12,5	12,5	16,0	28,5	27	54,0
1120TR1234	R1/2"	G3/4"	3,0	15,0	31,5	12,5	12,5	17,0	29,5	32	70,0
1120TR121	R1/2"	G1"	3,0	15,0	37,5	13,0	12,5	18,0	31,0	38	91,0
1120TR34	R3/4"	G3/4"	3,0	20,0	31,5	13,0	12,5	17,0	30,0	32	74,0
1120TR341	R3/4"	G1"	3,0	20,0	37,5	13,0	12,5	18,0	31,0	38	97,0
1120TR1	R1"	G1"	3,0	26,0	37,5	15,5	12,5	18,0	33,5	38	100,0

## 1122

## Swivel nipple BSPT thread



CODE	T1	T2	I1	I2	L	H1	H2	GR.
1122TR18	R1/8"	R1/8"	8	8	28	12	13	2,0
1122TR14	R1/4"	R1/4"	11	11	34	14	16	3,0
1122TR38	R3/8"	R3/8"	11,5	11,5	35,5	17	19	42,0

