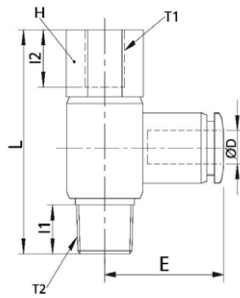


WTRHF-R

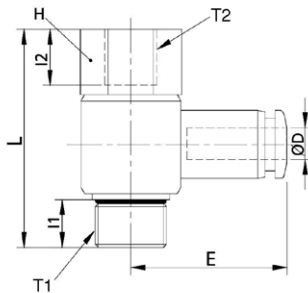
Swivel female banjo elbow BSPT thread nickel plated



CODE	ØD	T1	T2	I1	I2	H	L	E	GR.
WTRHF04R01	4	G1/8"	R1/8"	7,0	7,0	14	29,0	22,3	16,4
WTRHF04R02	4	G1/4"	R1/4"	9,5	9,0	17	33,3	24,1	27,4
WTRHF06R01	6	G1/8"	R1/8"	7,0	7,0	14	29,0	23,1	17,0
WTRHF06R02	6	G1/4"	R1/4"	9,5	9,0	17	33,3	25,1	28,0
WTRHF06R03	6	G3/8"	R3/8"	10,5	10,0	19	39,9	26,8	44,8
WTRHF08R01	8	G1/8"	R1/8"	7,0	7,0	14	29,0	25,6	17,8
WTRHF08R02	8	G1/4"	R1/4"	9,5	9,0	17	33,3	28,6	28,8
WTRHF08R03	8	G3/8"	R3/8"	10,5	10,0	19	39,9	29,6	45,4
WTRHF08R04	8	G1/2"	R1/2"	13,5	12,0	24	46,5	32,6	71,9
WTRHF10R02	10	G1/4"	R1/4"	9,5	9,0	17	33,3	31,0	32,2
WTRHF10R03	10	G3/8"	R3/8"	10,5	10,0	19	39,9	31,6	48,8
WTRHF10R04	10	G1/2"	R1/2"	13,5	12,0	24	46,5	34,6	75,3
WTRHF12R02	12	G1/4"	R1/4"	9,5	9,0	17	33,3	33,5	33,7
WTRHF12R03	12	G3/8"	R3/8"	10,5	10,0	19	39,9	35,6	50,4
WTRHF12R04	12	G1/2"	R1/2"	13,5	12,0	24	46,5	36,6	76,8

WTRHF-G

Swivel female banjo elbow BSPP & metric thread nickel plated



CODE	ØD	T1	T2	I1	I2	H	L	E	GR.
WTRHF04M5	4	M5X0,8	M5X0,8	4,0	5,5	10	20,5	20,0	8,3
WTRHF04M6	4	M6X1	M6X1	4,5	6,0	10	21,0	20,0	8,3
WTRHF04G01	4	G1/8"	G1/8"	5,5	7,0	14	30,0	22,3	18,4
WTRHF06M5	6	M5X0,8	M5X0,8	4,0	5,5	10	20,5	21,9	8,9
WTRHF06M6	6	M6X1	M6X1	4,5	6,0	10	21,0	21,9	8,9
WTRHF06G01	6	G1/8"	G1/8"	5,5	7,0	14	30,0	23,1	19,0
WTRHF06G02	6	G1/4"	G1/4"	6,5	9,0	17	33,7	25,1	30,5
WTRHF08G01	8	G1/8"	G1/8"	5,5	7,0	14	30,0	25,6	19,8
WTRHF08G02	8	G1/4"	G1/4"	6,5	9,0	17	33,7	28,6	31,3
WTRHF08G03	8	G3/8"	G3/8"	7,5	10,0	19	39,7	29,6	47,9
WTRHF10G02	10	G1/4"	G1/4"	6,5	9,0	17	33,7	31,1	34,7
WTRHF10G03	10	G3/8"	G3/8"	7,5	10,0	19	39,7	31,6	51,3
WTRHF12G03	12	G3/8"	G3/8"	7,5	10,0	19	39,7	35,6	52,9
WTRHF12G04	12	G1/2"	G1/2"	9,0	12,0	24	45,0	36,6	77,3

