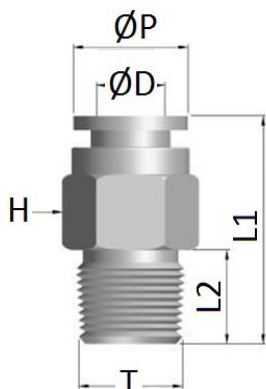


SXC-R

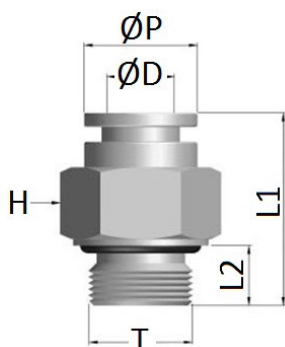
Male connector BSPT thread



CODE	ØD	T	ØP	L1	L2	H	GR.
SXC04R01	4	R1/8"	10,0	22,6	7,5	11,0	10,0
SXC04R02	4	R1/4"	10,0	23,3	11,0	14,0	19,0
SXC06R01	6	R1/8"	12,4	23,3	7,5	13,0	13,0
SXC06R02	6	R1/4"	12,4	22,8	11,0	14,0	17,0
SXC08R01	8	R1/8"	14,0	26,3	7,5	14,0	16,0
SXC08R02	8	R1/4"	14,0	26,3	11,0	14,0	19,0
SXC08R03	8	R3/8"	14,0	24,3	11,5	17,0	33,0
SXC10R02	10	R1/4"	16,5	29,3	11,0	17,0	26,0
SXC10R03	10	R3/8"	16,5	26,8	11,5	17,0	28,0
SXC12R02	12	R1/4"	19,0	31,0	11,0	20,6	40,0
SXC12R03	12	R3/8"	19,0	28,2	11,5	20,6	42,0
SXC12R04	12	R1/2"	19,0	28,2	15,0	22,0	58,0
SXC14R04	14	R1/2"	21,8	32,2	15,0	22,0	54,0

SXC-G

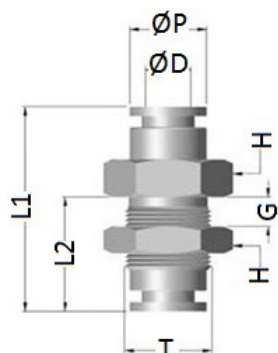
Male connector BSPP & metric thread



CODE	ØD	T	ØP	L1	L2	H	GR.
SXC04M5	4	M5	9,8	24,4	7,5	11,1	10,0
SXC04G01	4	G1/8"	9,8	22,6	8,0	14,2	17,0
SXC04G02	4	G1/4"	9,8	24,1	10,0	17,4	24,0
SXC06M5	6	M5	12,5	24,8	5,5	12,7	10,0
SXC06G01	6	G1/8"	12,5	24,6	8,0	14,2	16,0
SXC06G02	6	G1/4"	12,5	24,6	10,0	17,4	23,0
SXC08G01	8	G1/8"	14,2	27,6	8,0	14,2	17,0
SXC08G02	8	G1/4"	14,2	26,6	10,0	17,4	24,0
SXC08G03	8	G3/8"	14,2	26,7	10,0	20,6	37,0
SXC10G02	10	G1/4"	16,4	29,6	10,0	17,4	28,0
SXC10G03	10	G3/8"	16,4	26,8	10,0	20,6	35,0
SXC12G02	12	G1/4"	19,0	31,0	10,0	20,6	35,0
SXC12G03	12	G3/8"	19,0	31,0	10,0	20,6	40,0
SXC12G04	12	G1/2"	19,0	30,5	12,0	27,0	64,0
SXC14G04	14	G1/2"	21,8	31,5	12,0	27,0	103,0
SXC16G04	16	G1/2"	23,3	32,2	10,0	27,0	-

SXMM

Bulkhead connector



CODE	ØD	T	ØP	L1	L2	G	H	GR.
SXMM0400	4	M11X0,75	10,0	33,0	18,8	6	14	24,0
SXMM0600	6	M14X1	12,4	35,0	19,3	6	19	38,0
SXMM0800	8	M16X1	14,0	36,0	20,3	6	20,6	45,0
SXMM1000	10	M18X1	16,5	42,0	24,8	8	22	64,0
SXMM1200	12	M22X1,5	19,0	46,4	25,2	10	27	100,0
SXMM1400	14	M24X1,5	21,8	48,4	27,2	10	28,6	112,0
SXMM1600	16	M26X1,5	23,3	48,4	27,2	10	30	124,0

